

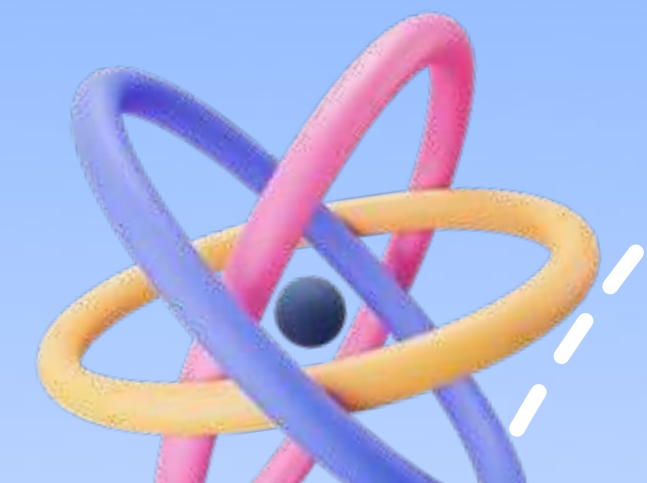


Exploring Comparative Adjectives

Comparative adjectives compare two entities.

Comparative adjectives compare two nouns, showing differences

LILYAN RICHANI



Comparative form

I add **-er** to the adjective

One syllable :

Big : big**ger** than

Small: small**er** than

Two syllables: if the adjective ends with (-y/ -w/ -er)

I add (**_er**)

Happy: happ**ier** than

Clever: clever**er** than

Narrow: narrow**er** than

Two syllables and more

Beautiful: **more** beautiful **than**

Intelligent: **more** intelligent **than**

Modern: **more** modern **than**

Reminder:

1) Look at the word near the **blank**.

Question:

Billy is _____ (short) **than** his brother.

shows comparison
between two people

→ (adjective) + er

Billy is shorter than his brother.

1 SYLLABLE
+ -ER

OLD → OLDER
CHEAP → CHEAPER
HIGH → HIGHER

1 SYLLABLE
VOWEL-CONSONANT-VOWEL
DOUBLE CONSONANT
+ -ER

HOT → HOTTER
BIG → BIGGER
THIN → THINNER

2 SYLLABLES ENDING -Y
-Y ⇒ -IER

HEALTHY → HEALTHIER
HAPPY → HAPPIER
NOISY → NOISIER

2 OR MORE SYLLABLES
MORE + ADJECTIVE

FAMOUS → MORE FAMOUS
GENEROUS → MORE GENEROUS

IRREGULAR ADJECTIVES

GOOD → BETTER
BAD → WORSE
FAR → FARTHER/FURTHER

EXERCISE: Write the comparative form of the following adjectives

Adjectives	Comparative
tall	
Funny	
Nice	
Beautiful	
Slim	
Cold	
good	
Easy	
Careful	
Bad	
fat	
Long	

Thanks For Watching

LILYAN RICHANI

OCTOBER, 2024

